

CANDIDATE PROFILE GUIDE



Learn more about the candidates for ANA-Illinois' Board of Directors, Nominating Committee, and ANA Representative to the ANA Membership Assembly.

Cast your vote for the candidates who:

- Possess the best qualifications and strengths for the office
- Demonstrate innovative and effective service in professional associations, in their communities, and/or in work settings.
- Use leadership skills to persuade others to work toward desired outcomes.

AUGUST 3RD, 2020

Introduction

The Candidate Profile Guide, which contains the candidate's self-reported profiles based on the response provided by the candidates in their consents to serves, is designed to introduce the members to the candidates for ANA-Illinois elective office. Members will have the opportunity to meet and learn more about the candidates during the Candidates Forum on September 9th at 6:30p via Zoom. Registration details are available on the ANA-Illinois website.

The ANA-Illinois Nominating Committee is pleased to present the following slate of candidates for the 2020 elections. Please note the candidates are listed in alphabetical order by last name.

ANA-ILLINOIS BOARD OF DIRECTORS

VICE PRESIDENT *(elect one)*

Maria Fatima Martinez DNP, RN

Monique Reed PhD, MS, RN

TREASURER *(elect one)*

Yolanda A. Coleman PhD, MS, RN, MT (ASCP), ACHE, NEA-BC

Jeannine Haberman DNP, MBA, CNE

DIRECTOR *(elect three)*

Holly Farley EdD, MS, RN

Gretchen LaCivita DNP, MPH, RN, CEN, CPN

Dorothy A. Kane MS, RN

Zeh Wellington, DNP(c), MSN, RN, NE-BC

Stephanie Yohannan DNP, MBA, RN, NE-BC

NOMINATING COMMITTEE

Nominating Committee (*elect three*)

Ann Altgilbers MSN, APRN

Lisa Conley MSN, RN, CCM

ANA REPRESENTATIVES

ANA Representative to the ANA Membership Assembly (*elect two*)

Anne Kowalczyk, MS, RN-BC, CPN

Ann M. O'Sullivan MSN, RN, CNE, NE-BC, ANEF

Tracy Viers MSN, RN

Zeh Wellington, DNP(c), MSN, RN, NE-BC



VICE PRESIDENT

Maria Fatima Martinez DNP, RN
Rasmussen College, Associate Dean

Describe any prior active involvement or participation with ANA-Illinois (including prior elected or appointed positions in ANA-Illinois).

No prior involvement.

Describe any prior active involvement or participation with ANA (national level).

No prior involvement.

Describe any prior active involvement or participation with other state nurses associations affiliated with ANA or other nursing organizations at the state or national level (e.g., ISAPN, IANNA, NAHN, AONL).

N/A

Describe any experiences you have had with public speaking, working with the media, working with legislators, and/or testifying in the legislature or other policy-making governmental bodies.

Associate Professor, guest speaker at the DNP conference, August 7, 2019. DNP topic and project - Mental Health Issues for the Incarcerated Patient.

Describe your experiences in fiduciary responsibility. - ONLY FOR CONSENTING FOR THE FOLLOWING POSITIONS - Vice President, Treasurer, & Director

Treasurer for Resurrection University Alumni Association Board.

Describe a situation where you influenced others to take action within your workplace, your community, or in a professional nursing organization.

COVID preparation and collaboration with the clinical coordinating department, before re-entry to clinical sites. Dedicated Educational Unit (DEU) facilitator. Mentorship for incoming academic faculty. Course lead instructor for Foundations, Adult Health I courses. Curriculum member to improve NCLEX RN pass rates. Graduate council member. BSN and MSN Educator. Proposal for post-Master's certificate to become a Nurse Educator. Legal nurse consultant for several Chicago law firms, on the development of clinical protocols, to provide ongoing medical and psychiatric care for the incarcerated.

Based on the purpose statement above from the ANA-Illinois bylaws, briefly explain how you would describe the value of ANA-Illinois to potential members.

The ANA-Illinois organization values their members by promoting the personal and professional development of all nurses. The ANA-Illinois organization leads by example to have their members join because of their exemplary vision. The vision exemplifies high standards of care, work for the quality improvement of health standards, and provide health care services for everyone in Illinois.

Is there anything else that you would like to share with members as part of the ballot?

Thank you for the opportunity to serve.



VICE PRESIDENT

Monique Reed PhD, MS, RN
Rush University, Associate Professor

Describe any prior active involvement or participation with ANA-Illinois (including prior elected or appointed positions in ANA-Illinois).

Thank you for your consideration during the 2020 Election. Although my direct involvement with ANA-Illinois has been through student engagement I have important experiences with faculty, healthcare systems, healthcare providers and communities that have prepared me for this important role. I have worked closely with the Student Nurses Association chapter at Rush University as a faculty mentor. Mentoring is a critical role of faculty and I

take my responsibility to mentor students and new faculty seriously. I have mentored six masters entry students who have served as research assistants on my studies. Two mentees, that graduated over two years ago, are both currently completing doctoral programs. The other two mentees have started their careers in nursing at federally qualified health centers. I have mentored students into disseminating their findings and have three national presentations with student co-authors. Since 2013 I have been an Albert Schweitzer Fellowship Faculty Advisor. The Schweitzer Fellows Program is dedicated to developing a corps of emerging professionals who enter the workforce with the skills and commitment necessary to address unmet health needs. I have mentored two past and one current fellow.

Describe any prior active involvement or participation with ANA (national level).

My national engagement in an organization has been with American Public Health Association, Association for Community Health Nurse Educators and as the Cardiovascular Nurse representative for the American Heart Association. Although my involvement with ANA has been at the student level, I have a proven track record of organizing faculty and systems to effect program and policy change. Additionally, I have had leadership roles within community-based organizations. I have a 20-year relationship with Westside Health Authority, an anchor community-based organization in the Austin community of Chicago, Illinois. Austin is an under-resourced community in Chicago and Westside Health Authority aims to empower community residents as community health workers, homeowners, and leaders in improving social determinants of health.

Describe any prior active involvement or participation with other state nurses associations affiliated with ANA or other nursing organizations at the state or national level (e.g., ISAPN, IANNA, NAHN, AONL).

In 2014 I was elected Co-Chair of the Adolescent Health Group of the Midwest Nursing Research Society (MNRS) and in 2013 was appointed Chair-Elect of the section. The adolescent health group of MNRS is a special research interest group established to recognize the scientific contribution of members to adolescent health research. As Chair, I oversaw the awards process which included the New Investigator Award. In 2016 I co-authored and received an AACN Academic/Community Partnership Award. This

award is granted to three academic/community partnerships across the nation annually that demonstrate an innovative and sustained relationship that extends beyond clinical placements with a commitment to incorporate the Guiding Principles for Academic-Practice Partnerships developed by AACN. Subsequently, in 2017 my team was invited by the Illinois Nurses Foundation to present on Academic Practice Partnerships and a write up of the presentation was featured in The Nursing Voice, December 2017 publication. From 2015-2017 I served on the Healthy Chicago 2.0 Collaborative Hospital Workgroup to ensure implementation of the Healthy Chicago initiative in hospital settings. In 2017 I was invited by the Illinois chapter of the American Heart Association (AHA) to contribute to the initiative called, Why Soda Tax? My participation in the AHA initiative included an on-camera interview and promotional print materials distributed throughout Cook County, Illinois for this \$1million campaign. In 2018, in recognition of my regional professional consultation, I was selected as the Community Health Nurse Awardee, of the National Black Nurses Association.

Describe any experiences you have had with public speaking, working with the media, working with legislators, and/or testifying in the legislature or other policy-making governmental bodies.

I have provided professional consultation with non-profit organizations, governmental agencies, and a regional nursing research organization with regional and national impact. From 2004-2006 I was a founding steering committee member of Consortium to Lower Obesity in Chicagoland Children (CLOCC). CLOCC is a nationally recognized leader for community-based obesity prevention instrumental in implementing policy initiatives in Chicago Public Schools such as the LearnWell initiative. LearnWell implemented specific guidelines for healthy eating, physical activity, and school gardens. As the third largest school district in the United States, the policies have national implications. From 2012-2014 I was invited as a founding steering committee member for the Northwestern University Alliance for Research in Chicagoland Communities, an arm of the Clinical and Translational Sciences Institute (CTSI). The Northwestern CTSI was one of the first in the Chicagoland area to be funded through NIH. We set the foundation for local funding opportunities for community engaged research. During that time, I was also a consultant for Congressman Danny Davis' 7th Congressional Illinois District Health Task Force and State Representative LaShawn Ford Health Task Force. Two of many health initiatives created were to implement obesity prevention programs in the region as well as implementation of Breast Cancer Support groups in collaboration with Susan G. Komen foundation. I have published three opinion editorials with over 500 followers on Twitter. These editorials aim to increase awareness and access to information for minority populations. The editorials promoted Thanksgiving as National Health History Day, marketing of unhealthy foods in African American communities and the soda tax and the need for obesity prevention interventions tailored and targeted for African American girls and mothers. I have been contacted by two doctoral students nationally and three community based organizations: Everthrive Illinois, Pilot Light and Westside Health Authority, for consultation on the state of the science and best practices related to community approaches to obesity prevention in African American populations

Describe your experiences in fiduciary responsibility. - ONLY FOR CONSENTING FOR THE FOLLOWING POSITIONS - Vice President, Treasurer, & Director

As Assistant Dean of the Masters Program I am responsible for managing an enrollment of 375 students, 15 staff members and a multi-million dollar budget. It is important in this time of uncertainty, to develop a plan that remains fiscally responsible yet responsive to the uncertain educational environment.

Working with various stakeholders to meet program needs while remaining within projections and expenses is critical in budgetary planning.

Describe a situation where you influenced others to take action within your workplace, your community, or in a professional nursing organization.

The seminal document Unequal Treatment, was an integral part of my doctoral education and fellowship. In this document the expert panel explored racial and ethnic differences in health outcomes, healthcare delivery and quality of care. I realized the opportunity to train nurses to meet the demands of a diverse patient population and changes in healthcare delivery. While nurses will continue to be needed at the bedside there will be a growing demand for public health/ambulatory care nurses. In response to this need I have spent my teaching career training nursing students to deliver culturally competent care and mentoring students in careers in practice, advocacy and research in out-patient settings. I sought funding for an innovative way to meet this demand. In 2014 I was awarded a \$9500 grant by the Rush College of Nursing Golden Lamp Society to begin the Public Health Nursing Scholar program. The program provides formalized mentorship by six Public Health Nursing faculty members to graduate entry masters students to develop a cadre of future public health nursing scholars. Since 2015, 30 scholars have been selected for inclusion in the program out of a pool of 80 applicants. Scholars have averaged three podium and poster presentations annually at Sigma Theta Tau International Conference, American Public Health Association, Association for Community Health Nurse Educators or locally at the DePaul Community Health Equity conference. The creation of the Public Health Nursing Scholar program served as the impetus for the development of similar programs in the other branches of the CON. For example, there are now Gerontological Nurse Scholar and Women, Children and Family Nurse Scholar programs. The following PHN Scholar end of program comments have been offered: "I chose nursing as a second career with the intent of working as a public health nurse. Without the PHN program, my ability to develop towards this goal while in school would have been greatly diminished. I often encountered the attitude of 'develop your bedside skills first, then you can explore public health.' The PHN program allowed me to do both at the same time." "I LOVED being a PHN scholar. It's one of the things I'm most proud of. Being a PHN scholar and having this network of public health champions to reach out to for advice helped me integrate public health into almost every aspect of education and work. They helped alleviate my doubts about being 'real nurse' in the public health setting which enabled me to pursue a public health immersion experience." "My experience as a PHN scholar has allowed me to see patient care with such a wide lens. Whether it's at the bedside or in the community there is always room to address social determinants of health."

Based on the purpose statement above from the ANA-Illinois bylaws, briefly explain how you would describe the value of ANA-Illinois to potential members.

ANA-Illinois is uniquely poised to lead the nursing community collectively through 2020 and beyond. The year of the nurse and nurse midwife brought about unprecedented times that spotlight the importance of the nursing profession in the care of the country's most vulnerable among us. From covid to the important collective conversations we are having about racism and discrimination, ANA-Illinois is a central ally to promote and integrate nursing as a leader in improving patient health outcomes. As seen in the Call to Action from American Nursing Association President: "At this critical time in our nation, nurses have a responsibility to use our voices to call for change. To remain silent is to be complicit. I call on you to educate yourself and then use your trusted voice and influence to educate

others about the systemic injustices that have caused the riots and protests being covered in the news. The pursuit of justice requires us all to listen and engage in dialogue with others. Leaders must come together at the local, state, and national level and commit to sustainable efforts to address racism and discrimination, police brutality, and basic human rights. We must hold ourselves and our leaders accountable to committing to reforms and action.” Together, ANA-Illinois and the nursing community can keep an eye on the work ahead of us as we unite for an equitable and just society to improve health outcomes.



TREASURER

Yolanda A. Coleman PhD, MS, RN, MT (ASCP), ACHE, NEA-BC
Sinai Health System, Executive Director of Care
Transformation, Care Continuum, and Clinical Excellence

Describe any prior active involvement or participation with ANA-Illinois (including prior elected or appointed positions in ANA-Illinois).

I am a current member of ANA-Illinois.

Describe any prior active involvement or participation with ANA (national level).

I am currently an active member of ANA. I am involved in IONL who works in collaboration with ANA.

Describe any prior active involvement or participation with other state nurses associations affiliated with ANA or other nursing organizations at the state or national level (e.g., ISAPN, IANNA, NAHN, AONL).

I am the Bylaw Chair for IONL and the Vice President of UIC Alumni College of Nursing Board.

Describe any experiences you have had with public speaking, working with the media, working with legislators, and/or testifying in the legislature or other policy-making governmental bodies.

I have a vast interest in engagement in healthcare and the community. I think my diverse background will serve well on the council. I currently serve as the Vice President of the University of Illinois Alumni Board, the Bylaws Chair for the Illinois Nurse Leader Association, Executive Director of All Nations COGIC, and as a founding Board Member for the Ezekiel Taylor Scholarship Foundation. I frequently public speak in front of various audiences. I have been involved in speaking in front of legislators and involved in discussing policies. I have also been involved in Nurse Lobby Day.

Describe your experiences in fiduciary responsibility. - ONLY FOR CONSENTING FOR THE FOLLOWING POSITIONS - Vice President, Treasurer, & Director

An effective healthcare executive with over 20 years of diverse experiences in academia, community, and university medical center environments. Exhibits progressive leadership in nursing with exceptional skills in fiscal responsibility, clinical operations, technology, quality improvement, and outcome identification. An expert in employing strategies that foster health promotion, teaching, and the provision of educational services. Demonstrates the ability to affect change in the organization; integrates research into practice; and collaborates with interdisciplinary teams. Adheres to factors related to safety, effectiveness, cost, and impact of resources utilized in the planning and delivery of nursing and other services. Serves as a role model for the nursing profession and acts as an advocate for patients and families. Significant experience and expertise in business operations, nursing leadership and practice.

Describe a situation where you influenced others to take action within your workplace, your community, or in a professional nursing organization.

I am an active member of in the community supporting and advocating for healthcare and Nursing throughout the Illinois. I serve on the Board of Directors for my family's scholarship foundation that supports sending male students to college who have been affected by gun violence. I serve as a Leader in the workplace while role modeling and promoting professional development and growth of nurses.

Based on the purpose statement above from the ANA-Illinois bylaws, briefly explain how you would describe the value of ANA-Illinois to potential members.

I possess a strong progression of leadership experience. I have an exceptional knowledge of organizational revenue. I have a sound performance record. I possess strong communication skills and a commitment to education. I work collaboratively across the continuum of care and with all leaders to achieve the quality, patient experience, financial and clinical program growth goals. I develop, monitor, and manage clinical program performance goals which include financial, growth, and quality and patient experience metrics across the continuum of care. I have cultivated an extensive knowledge and background in management and nursing leadership. I have provided guidance to nursing staff and students. I have demonstrated leadership in a complex environment with strong team building experience. I have been able to advance the practice of nursing by ensuring continued excellence in service and patient care.

Is there anything else that you would like to share with members as part of the ballot?

I have facilitated, directed, and coordinated nursing and operational activities through the delivery of cost effective and quality services. I have provided strategic leadership as a patient care executive responsible for all nursing and other designated patient care functions and services within the hospital organization. I have built effective partnerships and promoted participative relationships. I have implemented hospital-wide strategic initiatives and policies. I have collaborated with senior leadership to achieve the highest quality health outcomes in a clinically and fiscally accountable manner.



TREASURER

Jeannine Haberman DNP, MBA, CNE
Resurrection University Assistant Dean, Undergraduate Programs

Describe any prior active involvement or participation with ANA-Illinois (including prior elected or appointed positions in ANA-Illinois).

"It has been a privilege to participate with ANA Illinois in various roles for the last few years. ANA Illinois has an amazing group of diverse nurses eager to collaborate and share their passion.

Mainly, my involvement has been appointed positions with the Program and Nominations and Elections Committees since 2018. I have also had the opportunity to participate in the Professional Issues Conference, Student Nurses Lobby Day, and the Illinois Nurses Lobby Day in Springfield for the last three years. ANA Illinois's work to lobby to the state representatives and advance our profession in Illinois is critical. I look forward to our calls and conferences. My positions and terms are listed below. It is a pleasure to serve. Moreover, I have had the pleasure to participate in the ANA mentor program for the last two years. I have been both a mentee (throughout my DNP program) and mentor. Growing our own nurses brings me joy.

- Official for the ANA IL Nominations and Elections Committee- Jan 2019-Dec 2021
- Slated as a National ANA Candidate for the Nomination and Election Committee, June 2018
- Appointed to ANA IL Program Committee, Jan 2018-Dec 2020

Describe any prior active involvement or participation with ANA (national level).

"My participation and involvement in the national ANA arena began in 2018. In 2018, I was very new to the national scene and ran in the national ANA election in Washington DC for the Nominations and Elections Committee. Although I did not win the election that year, it was a valuable experience and one I enjoyed. This election was the first time I had to consider running a campaign, developing a slogan, hand out flyers, and presented to the ANA membership assembly. My presentation is listed below. My campaign table was next to our ANA President, Ernest Grant's table. Incredible! My eyes were opened on a national level and I was able to better understand how Illinois integrates with other states, each one with their own initiatives for the greater good. Amazing people! ANA Illinois officers were gracious and kind to share their expertise while purposefully lobbying with specific government representatives. Illinois nurses have an important seat at the national table. I also participate in the ANA book clubs and learn much from the online collaboration.

- Poster Presentation, Haberman, J., "Honest Habe"
- Ran for National Nominations and Elections Committee, Washington D.C.

Describe any prior active involvement or participation with other state nurses associations affiliated with ANA or other nursing organizations at the state or national level (e.g., ISAPN, IANNA, NAHN, AONL).

"I have been actively involved in the National League for Nursing participating in various roles for several years. I started as an NLN member and an NLN Ambassador when transitioning from decades of clinical

nursing to the world of academia. Exceptional group! Last year, I ran for the NLN Board of Commissioners election and began my three year term in January. It is an honor to serve. Words cannot describe the tireless dedication, critical work, unwavering support, and warmth of our national nursing leaders. Although new to the role, I have more confidence than ever in our nursing leaders and the progressive direction of our profession.

- Appointed NLN Chair of the Standards Committee, Washington DC, April 2020
- Elected NLN Board of Commissioners Official, Education Division; Washington D.C. Jan 2020-Dec 2022

Although not an official member, I have had the opportunity to participate in a few NAHN Illinois meetings and fundraising events for several years. To say NAHN is a robust group is an understatement. I enjoy working with them and bringing my nursing faculty/students to their meetings. In October, I did not miss their NAHN Gala in Chicago. Their energy is palpable. I also support the Illinois Nursing Foundation and have attended their holiday events for many years. I enjoy opportunities to celebrate the Illinois nursing community. These state and national networks are even more crucial through the COVID-19 pandemic disruptions. "

Describe any experiences you have had with public speaking, working with the media, working with legislators, and/or testifying in the legislature or other policy-making governmental bodies.

"As mentioned above, I have had experience working with public speaking, media, and legislators with the ANA and NLN on the state and national levels for the last few years. I have also had the opportunity to introduce speakers and facilitate ANA IL webinar programs. A concise description of my recent ANA IL speaking events is below. My current academic roles also provide valuable experience with public speaking and online presentations.

- Presenter: American Nurses Association IL Program Committee, Diversity in Academic Nurse Leadership
- Panelist Presenter: American Nurses Association IL, Preparing Nurses to Address Climate Change
- Presenter: American Nurses Association IL, Workplace Harassment: Your Rights and Responsibilities
- Presenter: American Nurses Association IL, Ethics and Professionalism: Developing Ethical Competency Program Committee Speaker, American Nurses Association IL Professional Issues Conference, Lisle, Illinois

Describe your experiences in fiduciary responsibility. - ONLY FOR CONSENTING FOR THE FOLLOWING POSITIONS - Vice President, Treasurer, & Director

My fiduciary responsibility consists of several professional and personal experiences over the years. For years, I have had the opportunity to optimize my nursing campus budget quarterly (including nursing faculty, staff, lab supplies), build a new nursing program from the ground up (anticipating enrollment, faculty growth, and capital equipment), build a new simulation center (leverage program development), and work at the director level in a large hospital system of four hospitals to staff, equip, and build a new cancer center. My MBA degree comes in handy for the forecasting, marketing, accounting, and financial aspects of my previous roles. I'm comfortable around spreadsheets and financial statements.

ANA Illinois Membership and downstream revenue drive a healthy organization. Analyzing marketing/competitor trends of all kinds (including unexpected events such as COVID 19) with nimble flexibility to pivot accordingly are critical to sustainable outcomes. I bring business acumen and awareness.

Describe a situation where you influenced others to take action within your workplace, your community, or in a professional nursing organization.

One situation comes to mind immediately. At my workplace years ago, nursing faculty and nursing leadership were tasked to make a decision on a prospective faculty candidate to hire. There were two candidates and only one position. Each faculty member had an opportunity to voice their opinion. We went around the boardroom table and expressed our candidate choice and rationale for our decisions. Interestingly, my opinion was the polar opposite than everyone else's opinion. It appeared many of the new faculty did not want to go against the group or did not have enough information to form their own opinion. Instead, they one by one preferred to agree with the faculty member before them. When it came to my turn, I was able to articulate my choice and the reasons to consider the other candidate. One faculty member and I debated for some time. She pounded out one point and I had several points on how this particular candidate had the credentials and experience we needed to elevate our program and team. She and I stood firm on our choice. At the end of the meeting when I was packing up to go home, my dean came in and asked me about my selection. I privately asked her about her choice. She agreed with the candidate I had selected, yet wanted a faculty consensus. I looked at her and said you can resolve this conflict. I said consider the why behind the choice. Why is this faculty member so adamant against this individual? I believe she was threatened by this candidate's credentials and experience as they were similar, yet markedly more robust than her own. I suggested she consider speaking with this faculty privately and reconfirming her position and value to our team. My choice of candidate was hired and years later she continues to bring lasting contributions to the organization.

Based on the purpose statement above from the ANA-Illinois bylaws, briefly explain how you would describe the value of ANA-Illinois to potential members.

I would describe the value of ANA Illinois to potential members simply by saying we all have a voice and need to be heard. ANA Illinois is listening. As Illinois nurses we lead from every seat, whether we realize it or not. ANA Illinois empowers our nurses and student nurses to not rely on a title to be a leader. ANA Illinois takes calculated risks to do the right thing for the health and prosperity of our profession. ANA Illinois is a cathedral builder. They honor the people and processes that have come before them and have an eye toward building for those that will come after. ANA Illinois members are supportive, inclusive, and comfortable with the details, while concurrently keeping an eye on the bigger picture. They have the ability to be analytical, data-driven, and rational with the understanding that all people and relationships matter. ANA Illinois is centered on measuring success not by who is excluded, but rather by whom it includes and how they succeed together for the greater good of the profession. An ANA Illinois membership is an investment in your livelihood and your future.

Is there anything else that you would like to share with members as part of the ballot?

Thank you for the opportunity.



DIRECTOR

Holly Farley EdD, MS, RN
Eastern Illinois University, Chair School of Nursing/Director
Traditional BSN

Describe any prior active involvement or participation with ANA-Illinois (including prior elected or appointed positions in ANA-Illinois).

I do not have prior active involvement.

Describe any prior active involvement or participation with ANA (national level).

ANA Mentor program 2019-2020. I was a mentor for the 8-month program and paired with a nurse that wanted to achieve a goal. We set goals and communicated throughout the program.

Describe any prior active involvement or participation with other state nurses associations affiliated with ANA or other nursing organizations at the state or national level (e.g., ISAPN, IANNA, NAHN, AONL).

I am a member of the Illinois Organization of Nurse Leaders. I currently serve on the Member Engagement Committee.

Describe any experiences you have had with public speaking, working with the media, working with legislators, and/or testifying in the legislature or other policy-making governmental bodies.

In my current role, I have been the inaugural director of a new traditional nursing program on the campus of Eastern Illinois University. This has required public speaking and working with the media throughout the process of securing approvals at the state level. Also, I have presented at several local and national nursing conferences. I have not directly worked with legislators but often write or call to voice my opinion in support or opposition to legal issues related to nursing. I have been an elected member of the Jasper County School Board for 11 years and the secretary for 8. This requires public speaking, developing policies and procedures, and communication with community members on a regular basis.

Describe your experiences in fiduciary responsibility. - ONLY FOR CONSENTING FOR THE FOLLOWING POSITIONS - Vice President, Treasurer, & Director

No response

Describe a situation where you influenced others to take action within your workplace, your community, or in a professional nursing organization.

I am a member of the inclusion and diversity committee on Eastern Illinois University's campus. I have participated in many conferences and presented on topics of diversity. Recently, we found several gaps in supporting minority and first-generation students on campus and found that they weren't successful once they got to campus. Through evidence-based research, I persuaded our leadership to consider creating an admission process that does not only look at the grade point average of potential candidates

but other characteristics that would be a good fit for a nurse. The goal is to admit a diverse group of students every year. Ultimately, we want to contribute to making the nursing profession more diverse.

Based on the purpose statement above from the ANA-Illinois bylaws, briefly explain how you would describe the value of ANA-Illinois to potential members.

I would describe ANA-Illinois as a valuable source of information to inform nursing practice. Being a member gives you up-to-date information about every important issue and change happening in our state. This not only helps nurses to change their practice but to be a part of the change. ANA-Illinois also give nurses a voice in the legislature by influencing healthcare policy that ultimately improves working conditions for nurses and healthcare for our patients. In addition, ANA-Illinois offers webinars and conferences that allow for continued education for Illinois nurses.

Is there anything else that you would like to share with members as part of the ballot?

Policy and politics are very interesting to me. I have taught RN-BSN students policy for several years and helping them to identify an issue and work through the steps of creating policy is exciting. Often students start out stating that they will not enjoy the class and that politics do not interest them; however, when they realize that all nurses can participate in policy, from simply contacting their legislators on an issue to creating policy and procedures in their workplace, they see it differently and want to participate at some level.



DIRECTOR

Dorothy A. Kane MS, RN
First Step Women's Center, Nurse Manager

Describe any prior active involvement or participation with ANA-Illinois (including prior elected or appointed positions in ANA-Illinois).

I have been on the By-laws committee since December 2019.

Describe any prior active involvement or participation with ANA (national level).

None

Describe any prior active involvement or participation with other state nurses associations affiliated with ANA or other nursing organizations at the state or national level (e.g., ISAPN, IANNA, NAHN, AONL).

None

Describe any experiences you have had with public speaking, working with the media, working with legislators, and/or testifying in the legislature or other policy-making governmental bodies.

I am comfortable speaking in front of a group when familiar with the subject. Since 1982 I have taught CPR; over the year's methods have changed and is mostly a video listen and practice at this point. But when the AV equipment fails (as in Ghana last February), I can teach without the video. At church I speak yearly to the congregation about fundraising for our local maternity home. For my quilt group I have been president once as well as Quilt Show Chairperson three times for our large quilt show speaking often with the group, organizing a large number of committees and keeping to our budget. For publicity of the quilt show I have been interviewed on Channel 20 News several times. For nursing, I have commented on the nurse practice act informally the last three sunsets. I suggested delegation language which was added in 2007. I am familiar with the legislative process and the rule making process in the State of Illinois. I have met with my representatives a number of times on matters important to me. During my graduate schooling I attended committee meetings and watched the senate at the state capitol. I edit and comment on legislation for my husband, a lobbyist and attorney.

Describe your experiences in fiduciary responsibility. - ONLY FOR CONSENTING FOR THE FOLLOWING POSITIONS - Vice President, Treasurer, & Director

I have been on various boards over the past 30 years: Lutheran High School education board for 3 years with 2 as secretary and the local figure skating club. In Q.U.I.L.T.S., the local Springfield quilt guild I have been the show chairperson three times and president once. I was the secretary of Central Illinois Chapter of the Oncology Nursing Society (CICONS) group as well as the coeditor of the CICONS Pathways newsletter 2012-2015. For many years, I was the assistant leader for two different 4H clubs. As nurse manager of a nonprofit I have experience organizing a health care organization to ensure excellent health care and ensure compliance with CDC, OSHA, IDPH, AGOG and other requirements. I understand the time, loyalty and confidentiality necessary to complete my fiduciary duties as a board member.

Describe a situation where you influenced others to take action within your workplace, your community, or in a professional nursing organization.

With the emergence of the COVID-19 pandemic, I gathered my staff together to develop a response which included changed policies, increased facility sanitation, increased personal protective procedures and expanded use of telehealth and other matters. As nurse manager, I monitored our response and frequently revised our measures in light of updates from public health and CDC. Through weekly staff meeting and emails I kept the staff apprised of the recommendations and asked for their input.

Based on the purpose statement above from the ANA-Illinois bylaws, briefly explain how you would describe the value of ANA-Illinois to potential members.

ANA-Illinois provides nurses a united front to influence change in policies and laws on a state and national level. ANA is a great source of information nurses can use. Weekly emails keep Illinois nurses informed about current issues and research findings.

Is there anything else that you would like to share with members as part of the ballot?

I love being a nurse! Being a part of ANA-Illinois as a director at large would allow me the opportunity to encourage a growing sense of professionalism and assure a nursing environment friendly to nurses and patients.



DIRECTOR

Gretchen LaCivita DNP, MPH, RN, CEN, CPN
Resurrection University, Associate Professor

Describe any prior active involvement or participation with ANA-Illinois (including prior elected or appointed positions in ANA-Illinois).

I have been a member of ANA-IL for approximately 5 years and most recently was appointed to the Legislative Committee. This appointment has afforded me the opportunity to take a more active role in ANA-IL and advance my passion in legislative action.

Describe any prior active involvement or participation with ANA (national level).

Other than membership, I have no prior active involvement in ANA nationally.

Describe any prior active involvement or participation with other state nurses associations affiliated with ANA or other nursing organizations at the state or national level (e.g., ISAPN, IANNA, NAHN, AONL).

I am currently a member of IONL and serve as a committee member for the Policy and Advocacy committee.

Describe any experiences you have had with public speaking, working with the media, working with legislators, and/or testifying in the legislature or other policy-making governmental bodies.

Throughout my career I have had multiple opportunities to work with media and legislators to advance causes that are important to nursing in Illinois. Most recently, while pursuing my DNP at Loyola University, Chicago, I was able to secure appointments with legislators in the Chicago-metro area and introduce junior level nursing students to these legislators, providing them with the opportunity to learn about the legislative process. Additionally, I worked with the Loyola contingent on Student Lobby Day (2018). During that experience, students were introduced to the lobbying process and were provided the opportunity to meet and engage with current legislators. I have also been the media consultant for Resurrection University in areas pertaining to advocacy and pediatrics.

Describe your experiences in fiduciary responsibility. - ONLY FOR CONSENTING FOR THE FOLLOWING POSITIONS - Vice President, Treasurer, & Director

Prior to my work as a nurse educator, I managed a grant of \$500,000 for a program focused on child safety and advocacy initiatives.

Describe a situation where you influenced others to take action within your workplace, your community, or in a professional nursing organization.

As a nurse educator and Associate Professor at Resurrection University, I have had the privilege of designing and delivering a course focused on advocacy in nursing. I have, over the last 4 years, shared with countless nursing students, how advocacy initiative influence the work of nursing and healthcare. I

have been able to introduce students and colleagues to local legislators who have come to Resurrection University to share their own experiences. Throughout these initiative, I have shared my passion for advocacy with future nurse, and encouraged them to understand the power their voices have in work that we do.

Based on the purpose statement above from the ANA-Illinois bylaws, briefly explain how you would describe the value of ANA-Illinois to potential members.

Those who are driven by advocacy, are truly fortunate to have a place in ANA-IL to share our passion. ANA-IL allows me the opportunity to be part of an organization where I can take my passion and translate it to action. Nursing education affords multiple opportunities to enrich the future of nursing. As a member of ANA-IL, I can utilize the dynamic resources to demonstrate to students how they have influence the improvement of health for all Illinois citizens. We are living through incredible, unprecedented times in our healthcare world and IL is certainly part of that ever-changing dynamic. It has been my honor and privilege to role model the profession standards set by ANA-IL as the professional standards for all nurses. I am proud to represent the ethics of nursing and the ethical standard of the ANA through my participation in ANA-IL.

Is there anything else that you would like to share with members as part of the ballot?

It is with pleasure that I write to you for consideration to the Board of Directors for the position of Director. Over my 25-year nursing career, I have become acutely aware of the care continuum within individual, local, state, and federal healthcare initiatives. I was fortunate to explore teaching outcome measures and dynamic evidence-based practice standards for populations at risk while pursuing my Doctorate of Nursing Practice at Loyola University, Chicago. During my DNP education I was able to advance my passion of healthcare policy and advocacy in nursing education. I was given the opportunity to develop core knowledge, skills, and attitudes surrounding curriculum development and standards in healthcare policy and advocacy, allowing me to put theories into practice and ideas into action. ANA-IL has been a vital part of this development over the past 5 years and most recently through my service on the ANA-IL Legislative Committee. Throughout my career, both in patient care and as a nurse educator, I have been able to share with nursing students and new nurses how advocacy, policy, and leadership in healthcare can maximize efforts in changing the trajectory of healthcare outcomes for a variety of different populations. These skills are vital for new nurses as they embrace advocacy as an integral component to their professional responsibility. As a member of ANA-IL, I believe I can empower nurses to embrace these core advocacy concepts, which are critical in meeting the needs of our at-risk patient populations. By working together, we can and will change the future direction of healthcare's landscape locally, nationally and globally.



DIRECTOR

Zeh Wellington, DNP(c), MSN, RN, NE-BC
Ann & Robert H. Lurie Children's Hospital of Chicago, Director
of Procedural Care - Surgical Services

Describe any prior active involvement or participation with ANA-Illinois (including prior elected or appointed positions in ANA-Illinois).

I have not served previously with the ANA-Illinois, however I was active previously in the ANA South Carolina where I presented at the state convention.

Describe any prior active involvement or participation with ANA (national level).

None

Describe any prior active involvement or participation with other state nurses associations affiliated with ANA or other nursing organizations at the state or national level (e.g., ISAPN, IANNA, NAHN, AONL).

Presenter at the 2019 SC Nursing Association Conference, an excepted presented at the 2020 ANCC National Magnet Conference®

Describe any experiences you have had with public speaking, working with the media, working with legislators, and/or testifying in the legislature or other policy-making governmental bodies.

A life of leadership, a life of service Have you ever been to Shoney's? The restaurant? One thing the place is known for is its strawberry pie. I'm sort of known for making a mean replica of the tasty treats. Today, in my kitchen, sit 12 of them. The smell of delicious, golden baked pie crust fills the air as pie tins crowd the kitchen island waiting for strawberry filling. "Whoever would be great among you must be your servant." -Mathew 20: 26-28 No, it's not a pie party. They're for the seniors, homebound, lonely and sick from St. Stephen's Episcopal Church and one of the many ways I give back. It's a small act that goes a long way. There are bigger ways, such as in capacity as one of the Clinical Directors of Nursing in the Perioperative area at the Medical University of South Carolina, but who can judge which are more effective – the smaller or the bigger ways? The most important thing I would want anyone to know about me is that I am grateful. I am grateful for all that I've been given in this life. And it is with a heart of gratitude that I engage in service to others: My occupation, my religion, my engagement with both work and community, is all taken with an attitude of gratitude and service. Some think that I have achieved a great deal and have a lot to be thankful for, and that having so much has made me grateful. But these people don't understand that very little can be accomplished without having a grateful and compassionate heart to begin with: I have achieved what I have achieved in my life because of how grateful I am and because I engage with the world in a mission of service. "... Truly I tell you, whatever you did for one of the least of these brothers and sisters of mine, you did for me." -Matthew 25:40 Helping others is my passion. Young or old, sick or healthy, gay or straight, black or white: my mission is not to judge but to help. Through acts of service, I advance positive social change and influence the lives of others. There are many things I could tell you about my service through participation at St. Stephens

Episcopal Church as on the board of elders, championing the fellowship committee, leading the missions drive, serving as a church usher and serving on the welcoming committee: Our work with One80 Place, the homeless shelter, providing canned goods and clothing; service to the low country Senior Center; my work raising money for Water Mission, an international Charleston-based group that helps poverty stricken populations have clean water by raising money and walking in its annual Walk for Water; donations to the reading to underprivileged children at Sanders Clyde Elementary School; and one of my favorites, providing and filling the snack trolley at the MUSC Cancer Center, where we offer free snacks and drinks as a small courtesy to patients and families of loved ones being treated at the center. It may be serving a meal at the Charleston Ronald McDonald house or participating in the heart walk; It is a little gesture that goes a long way in comforting others. He also organized and worked with a fellow church congregation – Calvary Episcopal Church to sew and crocheted blankets and hats for the young infant patients in the Children’s Hospital at MUSC. “But you shall not be like them. Instead, the greatest among you should be like the youngest, and the one who leads like the one who serves.”- Luke 22:26 As much as outreach is important, so is helping close at hand. At work, I’m a mentor in several capacities and continue to expand and share my knowledge. For years, I was the lead nurse and preceptor on the pediatric cardiac transplant team. We saved countless lives. I then became the charge nurse of MUSC’s 22 operating room suites. Now, I am honored to guide the Perioperative Holding Area, PACU, Interventional Radiology ready and recovery areas and the Pre-operative clinics at the Medical University of South Carolina. I have the opportunity every day to change lives for the better. As an MUSC 2015 Nursing School alumna graduating Magna Cum Laude, and to show my gratitude for a previous scholarship, I mentor other nurses, giving time, leadership, guidance and even participating in student studies in an effort to enhance the education of the aspiring students. Since I am fortunate enough to have been able to continue my education, I bring back what I’ve learned with monthly in-services to educate my staff and peers by sharing and presenting talks on research papers and/or other educational pieces. I continually strive to give back to my fellow nurses by leading competency training, mentoring nurse III projects, mentoring aspiring students in the master’s program, and teaching about evidence based practice. Others seem to appreciate my efforts and respond to my enthusiasm. I was proud to be named the Medical University of South Carolina’s Operative Nurse of the Year in 2013, 2017’s patient Safety Excellence Award, having received previous scholarships including MUSC’s inaugural scholarship, MUSC/ WGU Foundation Award Scholarship and the Nursing Excellence Scholarship Award toward my Doctorate program at Walden University. I have enjoyed continuous career advancement and I am proud and honored to be a nurse. This way of living in service and gratitude helps me engage in positive and meaningful ways with people of all walks of life and, I hope, what they take away is light, energy and love. It is with a humble heart that I continue my life’s work of leadership through service, sometimes that means a pediatric heart transplant and sometimes it just means pie.

Describe your experiences in fiduciary responsibility. - ONLY FOR CONSENTING FOR THE FOLLOWING POSITIONS - Vice President, Treasurer, & Director

No Response

Describe a situation where you influenced others to take action within your workplace, your community, or in a professional nursing organization.

No Response

Based on the purpose statement above from the ANA-Illinois bylaws, briefly explain how you would describe the value of ANA-Illinois to potential members.

Unparalleled Networking Opportunities. Vital Component of Lifelong Learning. Source of Mentors. Influence Health Policy. Personal and Professional Development

Is there anything else that you would like to share with members as part of the ballot?

Zeh Wellington is the Director of Procedural Care - Surgical Services at the Ann & Robert H. Lurie Children's Hospital of Chicago. He is humbled to have been practicing nursing for 18 years. Proudly, he was awarded the Presidential Values in Action Award for Compassion in 2020 at the Medical University of South Carolina, he is a recipient of the prestigious South Carolina Palmetto Gold Winner- top 100 nurses of South Carolina, the Medical University of South Carolina Share Grant Recipient as well as being awarded the Operating Room Nurse of the Year. He was bestowed the inaugural MUSC Nursing Scholarship, MUSC/ WGU Foundation Scholarship and the Nursing Excellence Award Scholarship to continue his education. Wellington is an alumnus of Virginia Polytechnic Institute and State University where he obtained his BS in Human Resources Management, MUSC 's School of Nursing receiving his Bachelor's in Nursing, Western Governor's School of Nursing where he was awarded his Master's in Nursing Leadership and is a doctoral candidate in Nursing Practice at Walden University. He has an extensive background in perioperative services serving as the clinical lead for surgical services with a focus in the pediatric congenital heart defects arena and cardiothoracic adult surgeries as well as establishing leadership structures, process improvement and competitive structure development as the president of the shared governance council. Zeh was instrumental in the development and success of the newly organized pediatric procedural areas as well as the preoperative clinics at MUSC. Zeh is a member of Sigma Theta Tau International Honor Society of Nurses, The National Society of Leadership and Success, Phi Sigma Kappa International Fraternity, a past Editor / Contributor of the G.A.T.E. (Great Achievement Toward Excellence) Nursing News Letter, a presenter at the 2019 SC Nursing Association Conference, an excepted presented at the 2020 ANCC National Magnet Conference® and an active member of the American Nurses Association.



DIRECTOR

Stephanie Yohannan DNP, MBA, RN, NE-BC
Rush University Medical Center, Interim Associate
Vice President of Nursing Operations

Describe any prior active involvement or participation with ANA-Illinois (including prior elected or appointed positions in ANA-Illinois).

I currently serve as a member of the Board of Directors for the ANA-Illinois. I also serve as a member of the Board of Directors for the Illinois Nursing Foundation as an ANA-Illinois representative.

Describe any prior active involvement or participation with ANA (national level).

I have attended webinars presented at the national level.

Describe any prior active involvement or participation with other state nurses associations affiliated with ANA or other nursing organizations at the state or national level (e.g., ISAPN, IANNA, NAHN, AONL).

I am a member of the National Association of Hispanic Nurses. I also serve as a board of directors for the Rush Nursing Alumni Association.

Describe any experiences you have had with public speaking, working with the media, working with legislators, and/or testifying in the legislature or other policy-making governmental bodies.

I have been an expert panel at the stroke symposium 2017 and 2018.

Describe your experiences in fiduciary responsibility. - ONLY FOR CONSENTING FOR THE FOLLOWING POSITIONS - Vice President, Treasurer, & Director

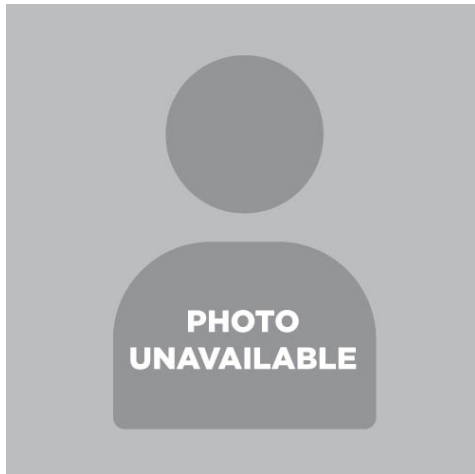
I am a current member of the ANA-Illinois Board of Directors.

Describe a situation where you influenced others to take action within your workplace, your community, or in a professional nursing organization.

I have worked closely with a DACA support organization fighting rights for students.

Based on the purpose statement above from the ANA-Illinois bylaws, briefly explain how you would describe the value of ANA-Illinois to potential members.

Being a member of the ANA-Illinois has provided me with lasting friendships and networking. My membership provides me with a voice to help impact quality and safety for all patients. It enhances my knowledge by providing me with continuing educational classes on topics that nurses encounter daily. ANA is an avenue for nurses to advocate what is important in our political environment.



NOMINATING COMMITTEE

Ann Altgilbers MSN, APRN
Sparta Community Hospital, Nurse Practitioner

Describe any prior active involvement or participation with ANA-Illinois (including prior elected or appointed positions in ANA-Illinois).

I have very little experience with ANA-Illinois. As a student nurse 10 years ago at Southern Illinois University Edwardsville, I was a member of National Student Nurses Association. I really enjoyed the comradely of working together to better the nursing profession. As I began working as a floor nurse, I joined ANA after school, but never got involved. I continued my education and obtained my masters. I have not been an active member, but with the nudge of a mentor, I would like to become an active member of ANA Illinois serving on the Nominations committee.

Describe any prior active involvement or participation with ANA (national level).

I do not have any prior involvement with ANA at a national level.

Describe any prior active involvement or participation with other state nurses associations affiliated with ANA or other nursing organizations at the state or national level (e.g., ISAPN, IANNA, NAHN, AONL).

I am a member of ISPAN, attending their annual fall conference for the past two years.

Describe any experiences you have had with public speaking, working with the media, working with legislators, and/or testifying in the legislature or other policy-making governmental bodies.

Currently, I am a Girl Scout leader for Troop 1649 in Breese, Illinois. I also am the cookie chair for our service unit which covers both Clinton and Washington counties. My experiences with the Girl Scouts is the most public speaking that I have had, but I can lead a sing along if we ever need that. Also, my troop consists of new 8th graders, and they require a special touch to capture their attention. I did serve on my hometown's sesquicentennial celebration on the advertising committee, which involved social media postings, selling merchandise, and curating and distributing a cookbook. I do not have interaction with legislators or government in a formal matter.

Describe a situation where you influenced others to take action within your workplace, your community, or in a professional nursing organization.

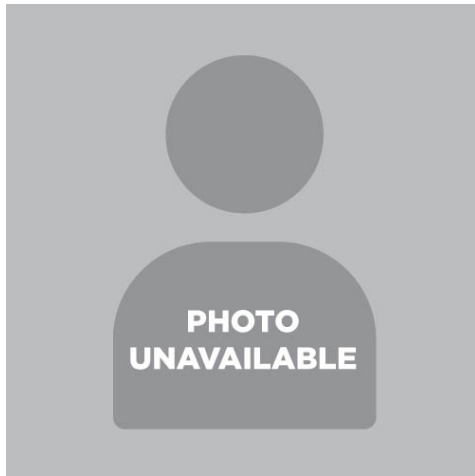
When I first started at Sparta Community Hospital, all of the paperwork for the nurse practitioners and Pas had the dreaded "mid-level." Through education, dialect and sheer stubbornness which included marking out "mid-level" a writing in Nurse Practitioner. The use of mid-level is almost extinct! I know that this a small victory, but one none the less. I'm currently working on my Full Practice Authority license and am encouraging my fellow Nurse Practitioner's in Sparta to follow suite, though it is not currently being supported by the physician's and administration at my current practice.

Based on the purpose statement above from the ANA-Illinois bylaws, briefly explain how you would describe the value of ANA-Illinois to potential members.

The value of joining ANA is to help propel our beloved profession to the highest heights. I would hope to bring the value of belonging to a professional organization to nurses whom haven't considered this before.

Is there anything else that you would like to share with members as part of the ballot?

I hope you will consider to help me continue to grow into my nursing career. I know that I don't have much experience, but I will work hard for the best interests for our profession in Illinois.



NOMINATING COMMITTEE

Lisa Conley MSN, RN, CCM
United Health Group/Optum, NICU Case Manager

Describe any prior active involvement or participation with ANA-Illinois (including prior elected or appointed positions in ANA-Illinois).

I have not been involved with ANA-Illinois. I have recently moved back to the state of Illinois after living and working in other states. I look forward to the opportunity to work with ANA-Illinois.

Describe any prior active involvement or participation with

ANA (national level).

I have been a member of ANA through my chapter in the state of Mississippi but was not actively involved.

Describe any prior active involvement or participation with other state nurses associations affiliated with ANA or other nursing organizations at the state or national level (e.g., ISAPN, IANNA, NAHN, AONL).

My professional involvement over the past many years has always been within the facility or company sponsored. I have been an active participant in many professional and charitable committees. I now feel that it is my obligation and privilege to give back to my profession in appreciation of the opportunities that I have been given.

Describe any experiences you have had with public speaking, working with the media, working with legislators, and/or testifying in the legislature or other policy-making governmental bodies.

For several years I served on the Executive Board for the Marion Cultural and Civic Center Foundation that raised monies to provide essential services. This required speaking at events and fundraising opportunities. I held the offices of Vice President and Secretary for our Foundation. During this time learned a lot about organizational dynamics. Prior to serving on the Board, my early stage experience came from participation in community theater. Those first steps on the stage leading to the delivery of those first lines were terrifying. But those first words and experiences led to my love of the theater and the ability to apply those lessons to other areas of my life. Later, as a nursing educator, I polished my presence in front of the room. Although I cannot say that I do not have any stage-fright, I no longer dread public speaking. As I continue my career, I frequently find other opportunities that place me at the front of the room in my professional career and in my church and civic organizations.

Describe a situation where you influenced others to take action within your workplace, your community, or in a professional nursing organization.

Education to improve performance is one of the things that I enjoy most about my current position. It allows me and my team to influence utilization of national guidelines and standards of care to be provided. This is true whether we are providing care in a large tertiary care center or a small community-

based hospital. Helping these facilities to adapt to the guidelines in ways that are relevant to their circumstance is one area that I find the most fulfilling. I get to help people problem-solve and make the guidelines fit their organizational process.

Based on the purpose statement above from the ANA-Illinois bylaws, briefly explain how you would describe the value of ANA-Illinois to potential members.

I see the purpose of ANA-Illinois as being an organizational engine to facilitate the implementation of the Quadruple Aim – to promote better quality care, at a lower cost, with improved satisfaction for both the patient and the healthcare provider. To achieve the goal of enhancing care, nurses must have a “Voice at The Table” and in the “Front of the Room”. As nurses, we have the experience, courage, talent, and education to promote change and to better the health of this nation. Nurses have the knowledge to promote change. Nurses represent our profession as we provide information. Nurses influence our legislators. Nurses educate our patients and the public. Nurses lead the change in the standard of care for the betterment of all.

Is there anything else that you would like to share with members as part of the ballot?

I have been a nurse for a long time now and I realize the importance of nurses backing their organization. I realize the importance of the effects of legislation and its effects on the health and welfare of the nation and community. Nursing is the soul of what I do. I have the education and experience to do a great job, the drive to learn what I do not know, and the willpower to persevere. I hope that I have the opportunity to serve and facilitate change.



ANA REPRESENTATIVE

Anne Kowalczyk, MS, RN-BC, CPN
DePaul University, Clinical Assistant Professor

Describe any prior active involvement or participation with ANA-Illinois (including prior elected or appointed positions in ANA-Illinois).

I have been a member of the ANA for multiple years, including my time as a student nurse. I believe in the community of nurses and I understand the value of this organization and I currently serve on several committees within the DePaul School of Nursing as a Clinical Assistant Professor. I serve on the Policies and Procedures committee, the Admissions and Retentions Committee, the Simulation Committee and I co-chair the Social Media Committee. I was appointed as the chair of the Fundraising Committee within the DePaul Student Nurse's Association while I was a nursing student, and I am a Certified Pediatric Nursing Board education champion.

Describe any prior active involvement or participation with ANA (national level).

I have not had participation, aside from membership, with the ANA at a National Level. I hope to have a career-long commitment of service with the ANA as I begin my involvement on a higher level to serve the ANA.

Describe any prior active involvement or participation with other state nurses associations affiliated with ANA or other nursing organizations at the state or national level (e.g., ISAPN, IANNA, NAHN, AONL).

2014-present American Nurses Association & ANA-Illinois (ID 34387527)

2013-present Sigma Theta Tau International (ID 1147612)

2016-present Society of Pediatric Nursing

2019-present National League for Nursing (ID 566698) 2019-present National Association of Pediatric Nurse Practitioners (ID 1176245)

I have maintained memberships with all of these organizations and have served as a CPN Champion for the Pediatric Nursing Certification Board to provide education to nurses seeking to become Certified Pediatric Nurses.

Describe any experiences you have had with public speaking, working with the media, working with legislators, and/or testifying in the legislature or other policy-making governmental bodies.

I have worked for nearly three years as a nurse education at DePaul University, and I look forward to presenting my research, The Barriers to the Timely Diagnosis and Treatment of ADHD in a Pediatric Primary Care Setting.

Describe a situation where you influenced others to take action within your workplace, your community, or in a professional nursing organization.

As a Clinical Assistant Professor, I have worked with the leadership team to plan and initiate virtual simulations during the pandemic. I have worked closely with both the Director of the DePaul MENP

program, Dr. Liz Aquino, as well as the Simulation Director, Dr. Dan Mead, to facilitate the roll out of the virtual simulations throughout the MENP program at DePaul. I have assisted the leadership as a Clinical Compliance Liaison to work with the student body to create a management system for students to successfully achieve and maintain clinical compliance for the DePaul School of Nursing. I have helped to build the DePaul School of Nursing Social Media Committee and facilitate honoring our students and alumni to promote visibility of the DePaul School of Nursing. I consider myself a transformation leader, and I am willing to tackle challenges in order to create a positive learning environment for students as well as positive environment for faculty to connect create positive learning opportunities for one another.

Based on the purpose statement above from the ANA-Illinois bylaws, briefly explain how you would describe the value of ANA-Illinois to potential members.

I would intend to add value to the ANA through open mentorship, increasing knowledge of quality improvement and encouragement of nurses to have their voices heard. I believe in stepping outside of the box to foster the very highest standards of nursing from an evidence-based perspective, cultural education and the vision that all nurses can make a difference in their communities and organizations. I commit to serve the goals of the ANA and work with individuals to inspire a collective community with open communication and support throughout the state of Illinois and beyond.

Is there anything else that you would like to share with members as part of the ballot?

Nursing is my passion, and some of the most important things to me are community and mentorship. I believe with collective collaboration, support and encouragement, nurses can achieve any goal within their communities, their organizations and even within the nation. Nursing mentorship is my heart and soul, and I want to share my energy, education and experience with my colleagues and peers. Together as a united front, we have the ability to change the world.



ANA REPRESENTATIVE

Ann M. O'Sullivan MSN, RN, CNE, NE-BC, ANEF
Illinois College, Adjunct Professor

Describe any prior active involvement or participation with ANA-Illinois (including prior elected or appointed positions in ANA-Illinois).

Vice-President, 2013-2018
Program Committee, Chair, 2017-present
Delegate to ANA Membership Assembly, 2013-2018
Expert Panel on Scope of Practice, Chair, 2014-15
Committee on Health Policy and Practice, Chair, 2013-14

Describe any prior active involvement or participation with ANA (national level).

Professional Issues Committee, 2017-present, Chair, 2019-present
ANA representative to Tricouncil Committee on Scope of Practice Decision Tree, 2015- 2016
Professional Issues Panel on Barriers to Scope of Practice, steering committee, 2015-2016
Professional Issues Panel on Workplace Violence and Incivility, advisory committee, 2014-15
Cohort Facilitator, ANA Leadership Academy, 2012-2013
Congress on Nursing Practice and Economics, 2006-2010, Vice-chair, 2009-10
Nursing Scope and Standards of Practice revision workgroup, chair, 2009-10
Competence workgroup, chair, 2007-2008
Social Policy workgroup, member, 2008-09
Just Culture workgroup, Chair, 2009

Describe any prior active involvement or participation with other state nurses associations affiliated with ANA or other nursing organizations at the state or national level (e.g., ISAPN, IANNA, NAHN, AONL).

Pi Pi Chapter of STTI--member, program committee, past president

IONL--Program committee

Describe any experiences you have had with public speaking, working with the media, working with legislators, and/or testifying in the legislature or other policy-making governmental bodies.

Present numerous CE programs in the state and nationally on various leadership, communication, health policy and civility topics.

Have given many press interviews over the years on various nursing issues.

Have worked with legislators on many nursing issues and provided testimony years ago in Springfield and Washington, DC.

Describe a situation where you influenced others to take action within your workplace, your community, or in a professional nursing organization.

As a nurse educator for 35+ years, I required students to contact their legislators on numerous nursing and other healthcare related issues. I took students to SNPAD every year. I also brought students and other faculty to visit with our legislators when they were back in the community. I also worked with faculty to include professional advocacy activities in their work and classes. As a community leader in our county last year, I chaired the group advocating for the referendum to build new schools.

Based on the purpose statement above from the ANA-Illinois bylaws, briefly explain how you would describe the value of ANA-Illinois to potential members.

ANA-Illinois is the voice of nurses in the state. We represent all nurses and advocate for nurses in the legislature and other policy making groups. ANA-Illinois advocates for nurses to practice to the fullest of their scope and standards in the legislature and health care facilities. ANA-Illinois offers numerous professional educational opportunities for nurses, including webinars and in-person opportunities. ANA-Illinois is the only professional organization that speaks for all of nursing. United together we are much stronger than single individuals.

Is there anything else that you would like to share with members as part of the ballot?

Nursing is my passion, and some of the most important things to me are community and mentorship. I believe with collective collaboration, support and encouragement, nurses can achieve any goal within their communities, their organizations and even within the nation. Nursing mentorship is my heart and soul, and I want to share my energy, education and experience with my colleagues and peers. Together as a united front, we have the ability to change the world.



ANA REPRESENTATIVE

Tracy Viers MSN, RN
Blessing Hospital, Registered Nurse

Describe any prior active involvement or participation with ANA-Illinois (including prior elected or appointed positions in ANA-Illinois).

I have been a member of ANA-Illinois for four years, serving as an alternative representative for the past 2 years, including participating in the 2019 Annual Legislative Assembly in Washington, DC. I have also been involved in the mentoring program through ANA-Illinois.

Describe any prior active involvement or participation with ANA (national level).

I have been a member of ANA for four years, participating in the 2019 Annual Legislative Assembly in Washington, DC as an alternative representative for Illinois.

Describe any prior active involvement or participation with other state nurses associations affiliated with ANA or other nursing organizations at the state or national level (e.g., ISAPN, IANNA, NAHN, AONL).

I am an active member in AACN and STN.

Describe any experiences you have had with public speaking, working with the media, working with legislators, and/or testifying in the legislature or other policy-making governmental bodies.

While I have limited experience in public speaking, I work throughout my organization working on committees and organizational projects. I sat as the chair for the hospital wide Professional Practice committee.

Describe a situation where you influenced others to take action within your workplace, your community, or in a professional nursing organization.

As a nurse in the community, I feel it is important to take a stand for truth and best practice. With the recent COVID-19 pandemic and calls for social justice nursing has had the opportunity to use or knowledge and voice to speak for the betterment of our communities. I have participated in peaceful memorials and protests for improved social equalities for POC. I have recently joined the Adams county human rights committee. I also use the tools and advertisement of my organization to share quality information on masks, testing, and slowing the spread of COVID-19 to friends and family via social media.

Based on the purpose statement above from the ANA-Illinois bylaws, briefly explain how you would describe the value of ANA-Illinois to potential members.

ANA-Illinois is a collaboration of nurses in all areas of care throughout the state working together to improve nursing. Being involved in the nursing community outside of your organization gives nurses opportunities to learn and grow professionally as well as meet new and exciting like-minded individuals.

Is there anything else that you would like to share with members as part of the ballot?

I am a lifetime learner, since completing my ADN in 2006 I have gone on to complete my BSN and MSN, while continuing to work at bedside for 14 years. I am also certified CCRN and TNS. I have started course work to complete my post-masters certificate as a CNS working in critical care. I am just starting work with the ANA but would love to continue to have the opportunity to represent nursing and the Quincy area.



ANA REPRESENTATIVE

Zeh Wellington, DNP(c), MSN, RN, NE-BC
Ann & Robert H. Lurie Children's Hospital of Chicago, Director
of Procedural Care - Surgical Services

Describe any prior active involvement or participation with ANA-Illinois (including prior elected or appointed positions in ANA-Illinois).

I have not been active with the ANA national level, but I feel that serving as an ANA representative to the Membership Assembly is a role that I am well suited for that requires action on issues that affect ANA and the state associations.

Describe any prior active involvement or participation with ANA (national level).

None

Describe any prior active involvement or participation with other state nurses associations affiliated with ANA or other nursing organizations at the state or national level (e.g., ISAPN, IANNA, NAHN, AONL).

2019 SC Nursing Association Conference

Abstract/ Poster Accepted

Poster presentation: "PACU Nurses administering Moderate Sedation in the OR"
Greenville, South Carolina

2020 Association of Operating Room Nurses (AORN)

Abstract/Poster Accepted

AORN GLOBAL Surgical Conference & Expo 2020

Poster presentation: "PACU Nurses administering Moderate Sedation in the OR"
Anaheim, California

2020 ANCC (American Nurses Credentialing Center) National Magnet® Conference

Abstract Submitted: Progressive PACU thinking leads to cross-training successes

Transitions in Nursing Practice Program Advisory Council Member

The goal of the Transitions to Nursing Practice Program is to support the practice of professional nursing, role transitions, and implementation of Evidence-Based Practice across the continuum at MUSC Health.

Medical University of South Carolina (MUSC)

Describe any experiences you have had with public speaking, working with the media, working with legislators, and/or testifying in the legislature or other policy-making governmental bodies.

2019 SC Nursing Association Conference

Abstract/ Poster Accepted

Poster presentation: "PACU Nurses administering Moderate Sedation in the OR"
Greenville, South Carolina

2020 Association of Operating Room Nurses (AORN)

Abstract/Poster Accepted

AORN GLOBAL Surgical Conference & Expo 2020

Poster presentation: "PACU Nurses administering Moderate Sedation in the OR"
Anaheim, California

2020 ANCC (American Nurses Credentialing Center) National Magnet® Conference

Abstract Submitted: Progressive PACU thinking leads to cross-training successes

Transitions in Nursing Practice Program Advisory Council Member

The goal of the Transitions to Nursing Practice Program is to support the practice of professional nursing, role transitions, and implementation of Evidence-Based Practice across the continuum at MUSC Health.

Medical University of South Carolina (MUSC)

North Carolina Governor's Page

Describe a situation where you influenced others to take action within your workplace, your community, or in a professional nursing organization.

- St. Stephens Episcopal Church - Vestry board of elders
- St. Stephens Episcopal Church championing the fellowship committee and leading the missions drive
- St. Stephens Episcopal Church usher and serving on the welcoming committee
- One80 Place, the homeless shelter, providing canned goods and clothing;
- Low country Senior Center
- Water Mission, an international Charleston-based group that helps poverty-stricken populations have clean water by raising money and walking in its annual Walk for Water
- Donations to the reading to underprivileged children at Sanders Clyde Elementary School
- Providing and filling the snack trolley at the MUSC Cancer Center, offering free snacks and drinks as a small courtesy to patients and families of loved ones being treated at the center.
- Serving meals at the Charleston Ronald McDonald house
- Charleston Heart Walk
- Organized and worked with a fellow church congregation – Calvary Episcopal Church to sew and crouched blankets and hats for the young infant patients in the Children's Hospital at MUSC.
- Elected delegate to the Diocesan Episcopal Convention 2017 and 2018
- Episcopal Church Human Resources Advisory Committee – Charleston, SC

Based on the purpose statement above from the ANA-Illinois bylaws, briefly explain how you would describe the value of ANA-Illinois to potential members.

Buck Woody shared in the article, "The Value of Professional Associations," that there are undeniable benefits in joining with a recognized group of technical professionals. The first is simply simple statistics – by joining, you have the option of meeting or interacting with more people than if you did not. The ANA association have membership boards where you can post questions, read peer publications, and

interact in other ways. Belonging to a group increases the odds that you'll learn something you may need to know someday or meet a person you can help or that will help you.

In my humble opinion, if you're a professional nurse, you should belong to a professional association. I've found that this is one of the best investments you can make in your career.

Is there anything else that you would like to share with members as part of the ballot?

South Carolina Palmetto Gold Winner and Recipient - Nurse Recognition and Scholarship Program – South Carolina's top nurses honoring the state's registered nurses who exemplify excellence in nursing practice and a commitment and distinction to the profession

Values in Action Award Winner for Compassion

Amy V. Cockcroft Leadership Fellows at the University of South Carolina

Walden Nursing Excellence Award Scholarship

Nurse of the Year - Sharon Bringewatt : Medical University of South Carolina Operating Rooms